



Creating one great destination IHQ

TREND Networks have transformed their new space into a more flexible, efficient and collaborative work environment.

TREND Networks were looking to relocate their office to a new Global Head Quarters, to expand and increase departmental headcount whilst also consolidating their warehouse operation under one roof.

Form Workplace Solutions undertook a comprehensive feasibility study enabling TREND to accurately assess the pros and cons of whether to refurbish their existing workspaces or move to new premises.



TREND'S KEY REQUIREMENTS

- A destination workplace: an office space that is a truly desirable place to work.
- Bring people together – disparate staff and departments.
- Consolidation of a previously outsourced/offsite warehouse into the IHQ.
- Improve productivity and collaboration.
- Host staff and supplier visits, product launches and industry events.
- Provide a new staff and client onsite training facility.



This analysis compared multiple locations, space planning occupancy strategies – that considered future planning with detailed assessments of building services determining mechanical and electrical infrastructure capabilities – providing TREND with an invaluable, detailed overview to support them in making those all-important decisions.

TREND took full advantage of the opportunity to assess and redefine their needs to provide the necessary expansion and opportunity to further improve their ‘Depend On Us’ customer and support ethos from the move and refurbishment.



DESIGNING A DESTINATION OFFICE

Once TREND had secured the lease of their new prestigious headquarters, the design work started in earnest. Working collaboratively with the TREND team, Form created a full design and project plan to transform the blank canvas into their dream office workplace. The property already benefited from beautiful, landscaped gardens overlooking the River Wye with superb location and commuter links. The result was a location TREND were proud to call home.

“The Form team understood our brief and requirements and worked closely with us to bring TREND Networks vision to life of uniting and providing collaborative and agile workspaces that inspires creativity and innovation for us. Together we have designed and built an IHQ workspace that clients and staff can collaborate and enjoy working within. Thank you.”

Paul Walsh, CEO, TREND Networks



HOW FORM APPROACHED CREATING TREND'S DESTINATION OFFICE:

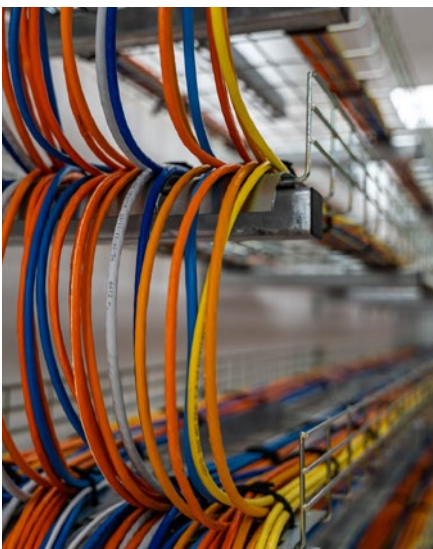
1. Understanding and delivering what employees want.
2. Making the office a productivity and agile hub.
3. Prioritising basic functional needs to further aid their business.
4. Designing and building a workplace to inspire.

“We are truly delighted with the transformation. As companies struggle to attract and retain top talent, TREND have used workplace design to engage with their employees. Progressive companies like TREND no longer view office space as a necessary expense, but instead as an appealing, productive space for employees, suppliers and clients to collaborate and drive business performance.”

Chris Harding, Director,
Form Workplace Solutions Ltd

Client: TREND Networks
Project: New International Headquarters
Floor area: Two floors, 15,428 sq ft

- ✓ Feasibility assessment
- ✓ Workspace design and fit-out
- ✓ Warehouse integration
- ✓ Demo and training space
- ✓ Meeting and focus rooms
- ✓ Manifestation designs
- ✓ Collaboration areas
- ✓ Breakout zones
- ✓ Decoration
- ✓ Feature lighting
- ✓ Refreshment area



We will be delighted to assist you in realising your next project.

workspace working for you



Appraisal & Planning



Interior Design



Build & Utilities



Project Management



Business Furniture



Finance & Leasing